

<b>ELEVATOR</b>	<b>Elevator drive</b> .....Rack and pinion <b>Maximum passengers</b> .....30 <b>Total base unit weight</b> .....15,656 lbs (7,116 kg) <b>Capacity</b> .....6,000 lbs (2,722 kg)
<b>CAR/GATES</b>	<b>Car weight</b> .....5,600 lbs (2,545 kg) <b>Maximum car speed</b> .....150 ft/min (45.73 m/min) <b>Interior dimensions</b> .....12'4" L x 4'8" W x 7'2" H (3.76 m x 1.42 m x 2.18m) <b>Landing gates</b> .....Swinging Gates
<b>TOWER</b>	<b>Maximum tower height</b> .....900' (274.32 m) Consult Factory for Greater Heights <b>Dimensions of tower</b> .....38" W x 28" L x 60" H (.97 m x .71 m x 1.52 m) <b>Weight of tower</b> .....300 lbs (136 kg) <b>Wall ties</b> .....Adjustable Strut <b>Tie-in intervals</b> .....30' (9.14 m)
<b>MOTOR/POWER</b>	<b>Electrical motor</b> .....35 HP 26 KW <b>Power required</b> .....33 KVA, 480 VAC, 60 Hz, 3Ø <b>Motor control</b> .....Variable Frequency Drive <b>Electrical outlet</b> .....120 VAC In Car <b>Base disconnect</b> .....Circuit Breaker in NEMA 4 Enclosure <b>Full load current</b> .....39.5 Amps <b>Traveling cable</b> .....Multi-Conductor Type W – Tower Height Plus 30' (9.14 m)
<b>BRAKES</b>	<b>Brake</b> .....Spring Set, Electrical Release Multiple Disc Brake <b>Safety overspeed governor</b> .....Centrifugal Actuated Multiple Friction Disc Brake <b>Stopping distance accuracy</b> .....+/- .6" (+/- 15.24mm) <b>Brake torque</b> .....175 ft./lbs. (102 Nm)
<b>COUNTER-WEIGHT</b>	<b>Weight of counterweight</b> .....5,600 lbs (2,545 kg) <b>Counterweight wire ropes</b> .....5/8" (15.88 mm) 6x25 XIP-IWRC <b>Length of counterweight ropes</b> .....2 x Tower Height Plus 30' (9.14 m)

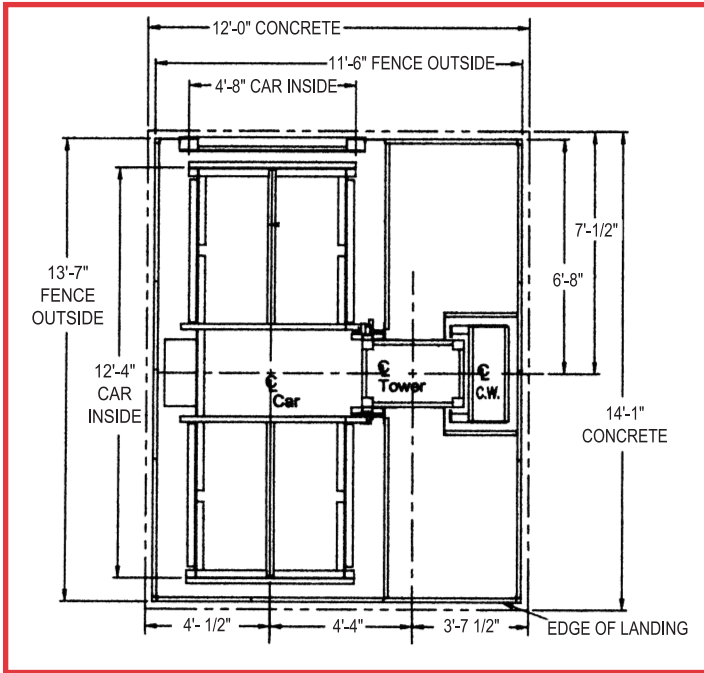
### STANDARD BASE UNIT

- Fully assembled enclosed car
- Overspeed governor
- Two manually operated vertically bi-parting car gates
- Control and limit switches
- 20' of tower for 0 lifting height
- Hot Dipped Galvanized Car & Tower
- Counterweight & Cathead Assembly
- Variable Frequency Drive (VFD)
- Base fence enclosure
- Base disconnect box
- Buffer stand and springs
- Power cord guide trailing wheel assembly
- GFI Receptacle in Car
- Hand lever control
- Interior Car Lighting

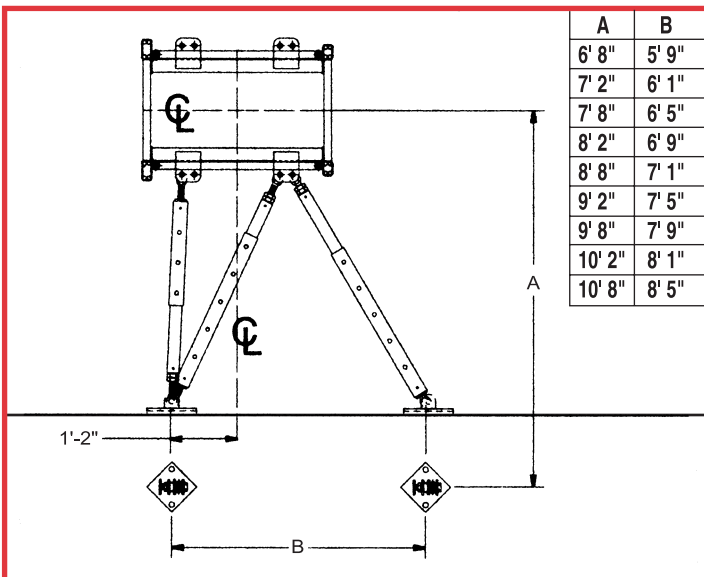
### OPTIONAL FEATURES

- Base platform and stairs
- Building landing gates
- Landing call station
- Automatic control system
- Emergency lighting systems
- Additional tower sections
- Wall Ties
- Auxiliary manual hand control provision for opposite hand installation
- Gin pole with winch for tower erection
- Communication or signal system
- Alarm installation
- Pit light & switch
- Pit stop switch
- Car top light & switch
- Car top receptacle

## FOUNDATION DIMENSIONS

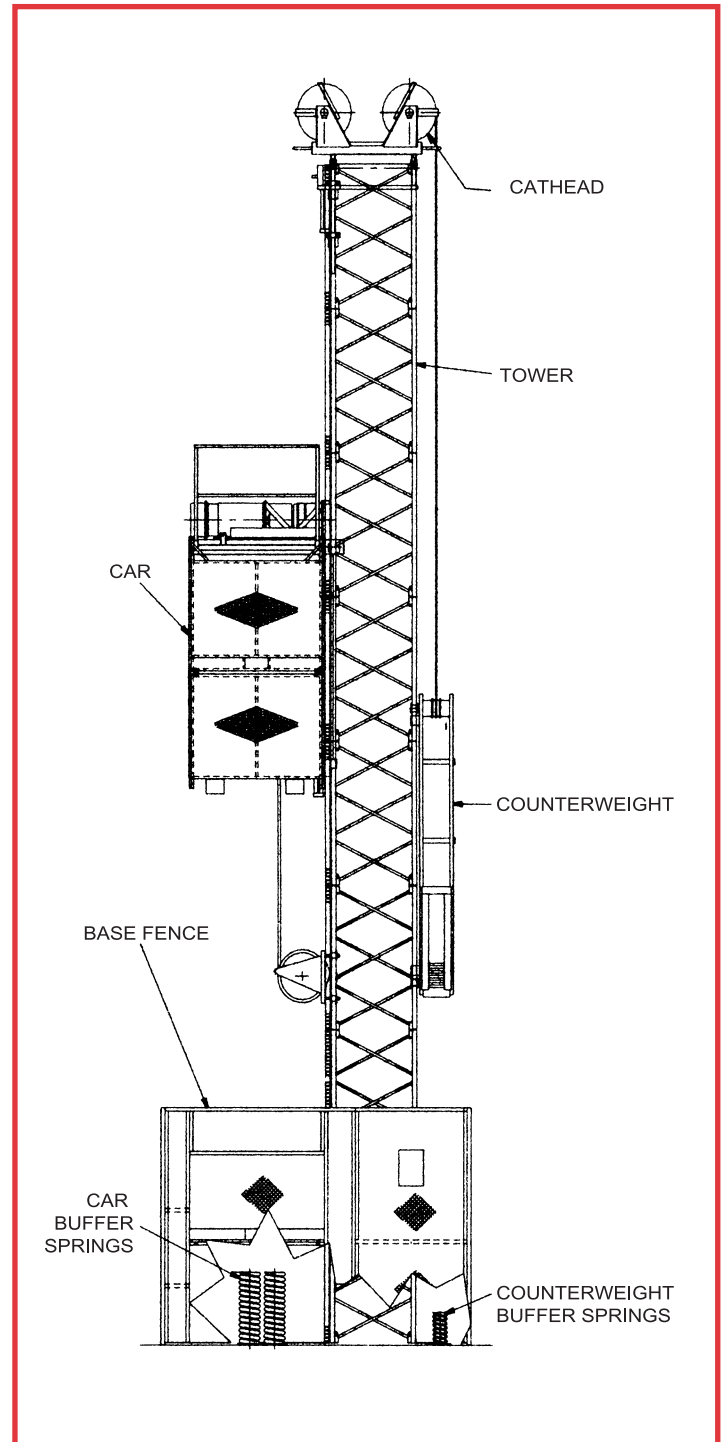


## WALL TIE DETAIL



*Dimensions are typical, please consult with engineering for specific configurations.*

## BASIC ELEMENTS



*Champion Elevators are designed to comply with ANSI A10.4 and/or A17.1 Part XV. Use of products must conform to safe practice and applicable statutes, regulations, codes, and ordinances. Drawings are illustrative only and do not necessarily depict exact configurations of products offered at a particular time. Champion Elevators, Inc. has a policy of continuous product research and development, and reserves the right to change design and specifications without notice.*