



vertical express

# Replacement Jacks

Lifting Elevators to New Heights.

Vertical Express Replacement Jacks are turned and polished to exact specifications. The accuracy of our manufacturing process ensures that operation of your elevator will be smoother. And the time invested in this often overlooked component makes our jack the longest-wearing in the industry.

www.verticalexpress.com

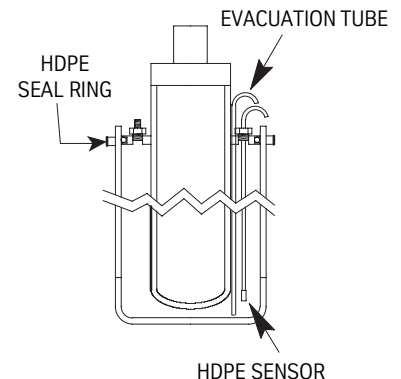


### Completely Customizable.

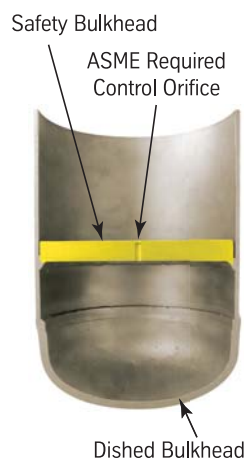
No matter the length, Vertical Express is able to customize a jack specifically for your job. We are able to locate and size the Victaulic® Oil Inlet to your job's specific requirements.

### Safety First.

Designed with ASME A17.1 code in mind, our jacks conform to all stated codes. Our jack assemblies include a stop ring, safety and dished bulkheads. In addition, Vertical Express offers a choice of containment protection systems, available upon request. Our corrosion protection complies with code requirements for the monitoring, containment and evacuation of oil and meets the most stringent standards used in the industry today.



### Cutaway Views



Contact your local Vertical Express sales representative or call (866) 448-3789 toll-free.

(866) 448-3789

expert service • express delivery

# Replacement Jacks

## For Vertical Express Contractor Use Only

Once complete, fax to (901) 261-1807. Be sure to include all surveys.

Office: \_\_\_\_\_ Date: \_\_\_\_\_ By: \_\_\_\_\_

Job Name: \_\_\_\_\_ Job Number: \_\_\_\_\_

PO Number: \_\_\_\_\_ Tel: \_\_\_\_\_

To place a direct order, call (866) 448-3789.

### Select Required:

Complete Jack Unit       Casing Only       Plunger Only

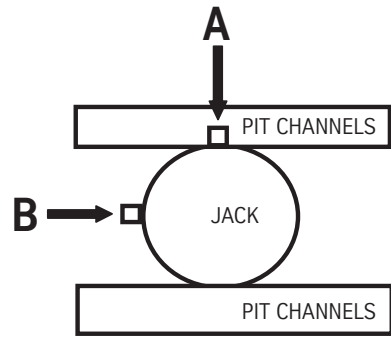
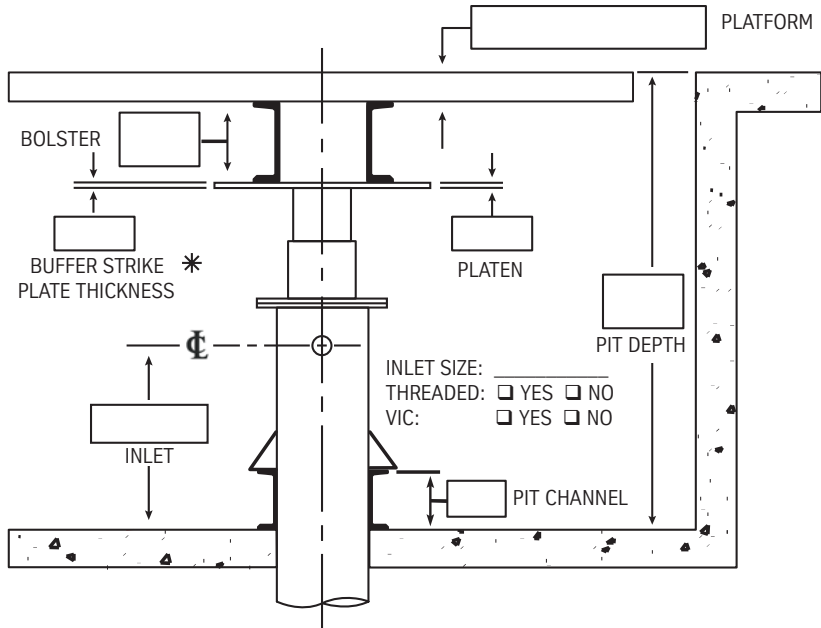
Number of Sections Required: \_\_\_\_\_ OR Longest Possible Section Length to Install: \_\_\_\_\_

### Data Required:

Capacity: \_\_\_\_\_      Overtravel (Top): \_\_\_\_\_ FT \_\_\_\_\_ IN (6" STD)      \*\* Required if New Buffers are Purchased  
 Gross Load on Jacks: \_\_\_\_\_      Overtravel (Bottom)\*\*\*: \_\_\_\_\_ FT \_\_\_\_\_ IN (10" STD)      \*\*\* Bottom Overtravel Must Equal Bottom Runby + Buffer Stroke + (1-1.5")  
 Upspeed: \_\_\_\_\_ FPM  
 Down Heavy Speed: \_\_\_\_\_ FPM\*\*  
 Net Travel: \_\_\_\_\_ FT \_\_\_\_\_ IN

Piston: \_\_\_\_\_      Cylinder: \_\_\_\_\_  
 Piston O.D.: \_\_\_\_\_      Cylinder O.D.: \_\_\_\_\_  
 Circumference: \_\_\_\_\_      OR Circumference: \_\_\_\_\_  
 Piston Wall: \_\_\_\_\_      Cased Hole Diameter: \_\_\_\_\_

### Dimensions Required:



Indicate Where You Want the Inlet Located  
 A       B

NOTE: \_\_\_\_\_  
 \_\_\_\_\_  
 \_\_\_\_\_  
 \_\_\_\_\_

\* ONLY NEED IF NEW BUFFERS ORDERED

### Optional Products:

Tape Wrap       Pit Channels – Length\*: \_\_\_\_\_  
 Oversized Cylinder       Other: \_\_\_\_\_  
 Jack Protection (Complete Enclosed System)  
 Platen

\* Only Required if New Channels are Purchased